

**WOLSELEY**  
Industrial



**MINING**

Trust Earned  
Through  
Performance



Fort St. John, BC  
Richmond, BC  
Prince George, BC  
Edmonton, AB  
Grand Prairie, AB  
Rimbey, AB  
Saskatoon, SK  
Esterhazy, SK  
Burlington, ON  
Sarnia, ON  
Sudbury, ON  
Pointe Claire, QC  
Saint John, NB

**Wolseley Industrial is a leading supplier of pipe, valves, fittings and support services to Canada’s Mining markets.**

A specialist stockist and distributor, Wolseley Industrial offers a comprehensive range of products backed by an industry leading team of technically knowledgeable associates focused on delivering efficiencies and cost savings to its customers.

## Consistent with Wolseley Canada’s values of **Respect, Trust and Inclusion.**

Wolseley Industrial acknowledges and respects our Indigenous peoples of Canada on whose traditional territory we do business and whose historical relationships with the land continue to this day.

Wolseley Canada is committed to upholding the values of equity, diversity, inclusion in our working environments. We know that we all share responsibility for creating an equitable, diverse and inclusive community. In pursuit of our values, we seek associates who will work respectfully and constructively with differences across all levels of our organization.

We actively encourage employment and vendor applications from members of groups with historical and/or current barriers to equity, including, but not limited to,

- First Nations, Métis and Inuit peoples, and all other Indigenous peoples;
- Members of groups that commonly experience discrimination due to race, ancestry, colour, religion and/or spiritual beliefs, or place of origin;
- Persons with visible and/or invisible (physical and/or mental) disabilities;
- Persons who identify as women; and
- Persons of marginalized sexual orientations, gender identities, and gender expressions

Wolseley Canada is proud to support the following partners as part of our diversity and inclusion programming:





**CANADA'S VALVE SPECIALIST**

## Quality, Consistency, Economy

Since the late 90s, Meridian™ has been synonymous with affordable, high quality valves and actuators that demonstrate the ability to meet or exceed customer and industry specifications.

Through ongoing feedback from customers in operations, engineering, procurement and maintenance, Meridian™ products have been developed with today's requirements in mind.

The Meridian brand has extended from threaded and socket weld ball valves to flanged floater and trunnion ball valves, API 6D check valves, and actuators.

Today, the Meridian™ brand exemplifies attributes expected of a top-tier provider—safety, quality, operation, and long service life.



# FNW®

Established in 1979, FNW traces its roots to Familian Northwest when a group of industrious sales associates responded to a demand from the industry and developed the first all-cast stainless steel knife gate valve in the country.

Since then, FNW expanded their offering to include ball, butterfly, gate, globe, and check valves. Today, we continue to exceed industry standards and add additional products to our line, such as flexible connectors, gauges, and hangers.

We continually inspect and test our products to ensure customers are provided with superior value.

**FNW.COM**

**VALVES | ACTUATION  
PIPING PRODUCTS | FASTENERS**



# Cut/Grooved Pipe Production



Wolseley Industrial Saskatoon has greatly expanded our production capacity with grooved and cut pipe!

**BANDSAW CUTTING** Up to 14" NPS

**TORCH CUTTING** 14" NPS to 24" NPS

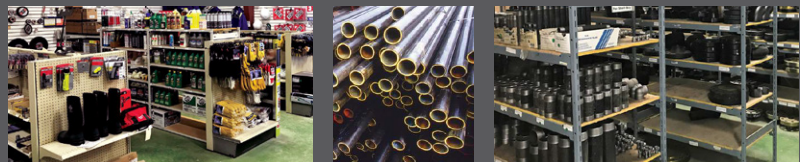
**THREADING** 1/8" NPS to 6" NPS (NPT Thread Only)

**ROLL GROOVING**  
2" NPS to 12" NPS STD Groove  
18" NPS to 20" NPS STD Groove  
14" NPS to 24" NPS AGS Groove

**CUT GROOVING**  
1" NPS to 10" NPS STD Groove  
4" NPS to 10" NPS HP70ES Groove

**STOCKING SIZES**  
1/2" SCH40 to 24" STD A53 Black Pipe  
1/2" SCH40 to 6" SCH40 A53 Galvanized Pipe  
2" SCH10, 4" SCH10, 6" SCH10 A53 Black Pipe  
2" SCH10, 4" SCH10, 6" SCH10 A53 Galvanized Pipe  
1/2" SCH80 to 8" SCH80 A106 Seamless Black Pipe  
1" to 6" SCH160 and XXH A106 Seamless Black Pipe

# Pipe, Fittings & Flanges



## PIPE

### Seamless & ERW Pipe

- SA/A53
- SA/A53B
- SA/A106B
- SA/A333
- SA/A312-T304-T316
- SA/A335-P5-P9-P11-P22
- CSA Line Pipe
- API 5L-X42-X70
- ASTM A252 Grades 1 & 2

### FLANGES & FITTINGS

#### HDPE Pipe & Fittings

#### Flanges

- SA/A 105N
- SA/A 350-LF2

- A182-F316
- A182-F5-F9-F11-F22
- CSA GR 248-GR 359

#### Studs, Nuts & Bolts

- B7, B7M, L7M, B8, B8M, B16, GR 5, GR 8 - Studs
- 2H, 2HM, L7M, 8M - Nuts
- Bolt Supplies
- Threaded Rod

#### Forged Steel Fittings

- SA/A105N
- A182-F316SS
- SA/A350LF2
- A182-F5-F9-F11-F22

#### Weld Fittings

- SA/A 234-WPB
- SA/A 420-WPL6
- A403-WP304-WP316

- CSA GR 248-GR 35
- SA/A234-WP5-WP9-WP11-WP22

#### Malleable Fittings

- Black Malleable
- SS Malleable

#### Gaskets

- Graphite
- Spiral Wound
- O-Ring
- Ring Gaskets
- Sheet
- Flange Isolation Kits
- Packing

#### Pipe Nipples

- SA/A106B
- SA/A333

## INSTRUMENTATION

### Tubing

- 1/4" to 1"
- .035, .049, .065 Wall

### Fittings

- DK-LOK

### Gauges

- Winters
- Wika



Products listed may not be available in all regions.



# VALVES FOR THE MINING INDUSTRY

Established in the late 1980s in Laval Quebec. ORBINOX has emerged as a pre-eminent market leader in the supply of knife gate valves, slide gates, and slurry valves designed for mining and industrial applications in North America

[orbinox.com](http://orbinox.com)



# Mining Solutions



ASC Engineered Solutions™ understands the challenges the mining industry faces every day. We're committed to not only supplying quality, long-lasting products, but also on building strong connections with our customers by listening to those in the field and those leading their organizations. We know having a partner that you can rely on is critical for your business and your peace of mind. Our comprehensive line of durable products with an experienced sales team creates a level of support that is unmatched in the mining industry.



WELCOME TO THE



**modéc**

**WORLD**



**Efficiency vs safety,  
why choose?**

[www.modéc.fr](http://www.modéc.fr)



MC89



Use of a battery -powered portable valve actuator (MC89) to safely access and operate a hard-to-reach valve



JA73



Use of a battery-powered portable valve actuator (JA73) to operate a difficult valve



**SHURJOINT®**

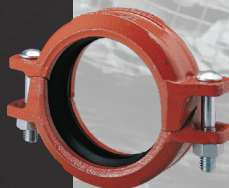
the globally trusted

**grooved system**



Shurjoint grooved couplings deliver unmatched durability & alignment flexibility, even under extreme underground pressure. Trusted by contractors in the world's toughest jobs.

- ✓ no special grooving tools required - OGS
- ✓ wide range of sizes, materials & coatings to match any spec
- ✓ available across Canada
- ✓ 10 year warranty
- ✓ CSA B242
- ✓ ASTM D2000



**"Apollo" Valves**

- ✓ American made products
- ✓ trusted in mines globally
- ✓ built for high pressures & temperatures
- ✓ fast install to lower downtime
- ✓ backed by Wolseley network



proven underground.

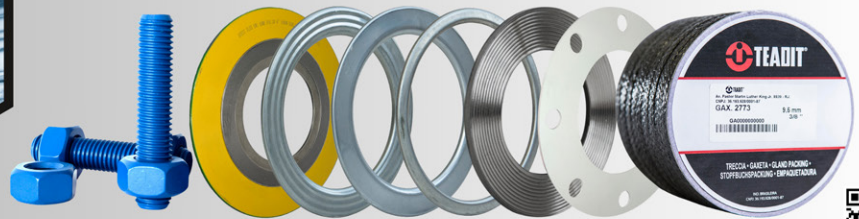
**trusted above**



Mining demands control. "Apollo"® Valves give you just that—from our rugged 86B ball valves to SmartPress® stainless solutions that cut install times in half.



**INNOVATIVE SOLUTIONS.  
QUALITY YOU CAN TRUST.  
POWER THROUGH DISTRIBUTION.**



## HDPE Piping Systems

We offer a variety of HDPE Pipe, fittings, fabricated HDPE structures and aqua/marine floats that meet our customer unique requirements.

PE4710 HDPE pipe in 50 ft Straight lengths, Reels and Coils. Type 1 & 2 HDPE Dual Containment HDPE pipe for environmental/ mining applications.

**Elbows**

**Tees**

**Wyes**

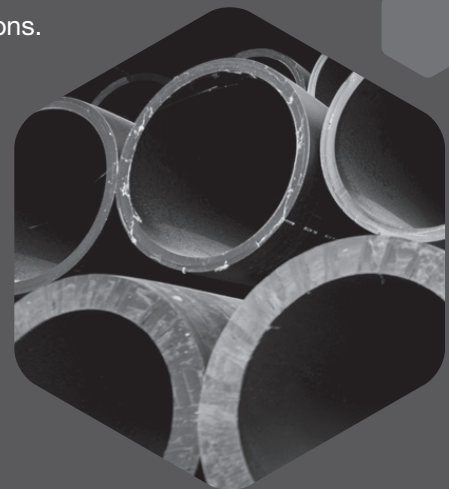
**Crosses**

**Swage and Plate**

**Structures**

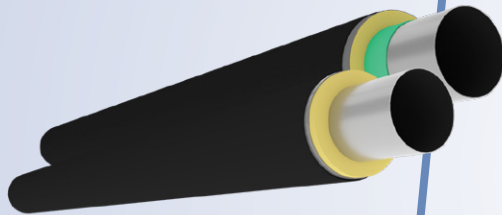
**Dual Containment**

**Floats**





## THE XTRU-THERM SYSTEM



**Polyethylene Jacketed,  
Polyurethane Insulated  
Piping System**

The XTRU-THERM piping system is completely engineered by PERMA-PIPE's experienced engineering staff. Straight lengths, elbows, tees, anchors and end seals are all preengineered components. Thermal stress and displacement, heat loss/gain, soil loading calculations and layout drawings can be provided. The XTRU-THERM system is engineered to reduce field costs by providing factory fabricated fittings and components to reduce field connections, as compared to the field kit method.

PERMA-PIPE treats the HDPE jacket so that it bonds to the polyurethane foam insulation. This bonding, along with the insulation bond to the service pipe, results in a completely bonded system. All components expand and contract as a system. There are no gaps for water to travel through, which can degrade the insulation or service pipe.

PROTECTION THROUGH ENGINEERED INNOVATION  
[permapipe.com](http://permapipe.com)



A WATTS Brand

## Quality is our legacy.

Bradley's unsurpassed offering of industrial solutions and depth of expertise has a halo effect on workplace safety and protection turnkey tepid water skid packages in addition to our proven Halo eyewash and eye/face wash stations. They provide the most complete washdown coverage of any solution on the market today. With innovative products like Halo, Bradley is the place to turn for emergency solutions.

[bradleycorp.com](http://bradleycorp.com)



# Dixon Mining Product Range



The Right Connection®

[canada.dixonvalve.com](http://canada.dixonvalve.com)



Uncommon Excellence • Uncommon Excellence • Uncommon Excellence • Uncommon Excellence • Uncommon Excellence



## Devcon Coating Solutions



### Chockfast Red Versaflow – 1 Bag Kit

A high-performance epoxy grout packaged in a convenient 0.44 ft<sup>3</sup> single-bag kit. Engineered for efficient installation and long-term reliability in demanding settings.

- Efficient flow—2.7× faster than competitive grout systems.
- Reaches confined or elevated spaces with minimal equipment.
- High compressive strength for stable, long-term alignment.
- Low exotherm and negligible shrinkage reduce cracking.



### Devcon Korrobond 65 Ultra

A next-generation high-performance crusher backing compound designed for gyratory and cone crushers. Engineered for superior compressive strength, faster application, and improved safety in Heavy-duty crushing environments.

- High compressive strength (~19,500 psi) for extended equipment lifespan.
- Improved flow and reduced cure time for faster turnaround.
- Minimal shrinkage and enhanced safety under high stress.
- 100% solids—no solvents for cleaner, safer handling.

# DK-LOK

dklokcanada.com

DK-LOK services a wide range of industries, including offshore/ onshore oil and gas, Chemical, Petrochemical & Process Instrument, Refinery, Analytical, CNG & NGV, Power Generation, Shipbuilding & Marine Engine, Equipment & Machinery, Semiconductor, Railway Vehicles. We have expanded our product offerings to cover Electrical heat trace, pre-insulated tubing, and instrumentation tubing along with all required accessories.

## INSTRUMENTATION FITTINGS



DK-Lok  
Tube Fittings



Instrumentation  
Pipe & Weld Fittings



K Series  
JIC Tube Fittings



Metal Flexible  
Hose & Tube



JIS Bite Type  
Tube Fittings (DIN/JIS)



Hydraulic  
Pipe Fittings



HD Series  
O-Ring Face Seal Fittings



High Pressure  
Fitting & Valves

## INSTRUMENTATION VALVES



Ball & Plug  
Valves



Metering, Needle  
& Regulator Valves



Quick Connect  
Filters



Cryogenic  
Valves



Check & Relief  
Valves



Manifolds, Gauge Root, Rising Plug, Toggle,  
Diaphragm, Bleed & Purge Valves



Block & Bleed Valves  
/ Monoflange



J Series Air  
Distribution Manifolds

**Wolseley Industrial  
is committed  
to your success!**



**WOLSELEY** |  
Industrial



[wolseleyindustrial.ca](http://wolseleyindustrial.ca)

**Contact Us:**

1 (800) 661-6997

[alberta.mro@wolseleyinc.ca](mailto:alberta.mro@wolseleyinc.ca)

[burlington@wolseley.com](mailto:burlington@wolseley.com)

[esterhazy@wolseley.com](mailto:esterhazy@wolseley.com)

[richmond@wolseley.com](mailto:richmond@wolseley.com)

[saint.john@wolseleyinc.ca](mailto:saint.john@wolseleyinc.ca)

[sarnia@wolseley.com](mailto:sarnia@wolseley.com)

[saskatoon@wolseley.com](mailto:saskatoon@wolseley.com)

[sudbury@wolseley.com](mailto:sudbury@wolseley.com)